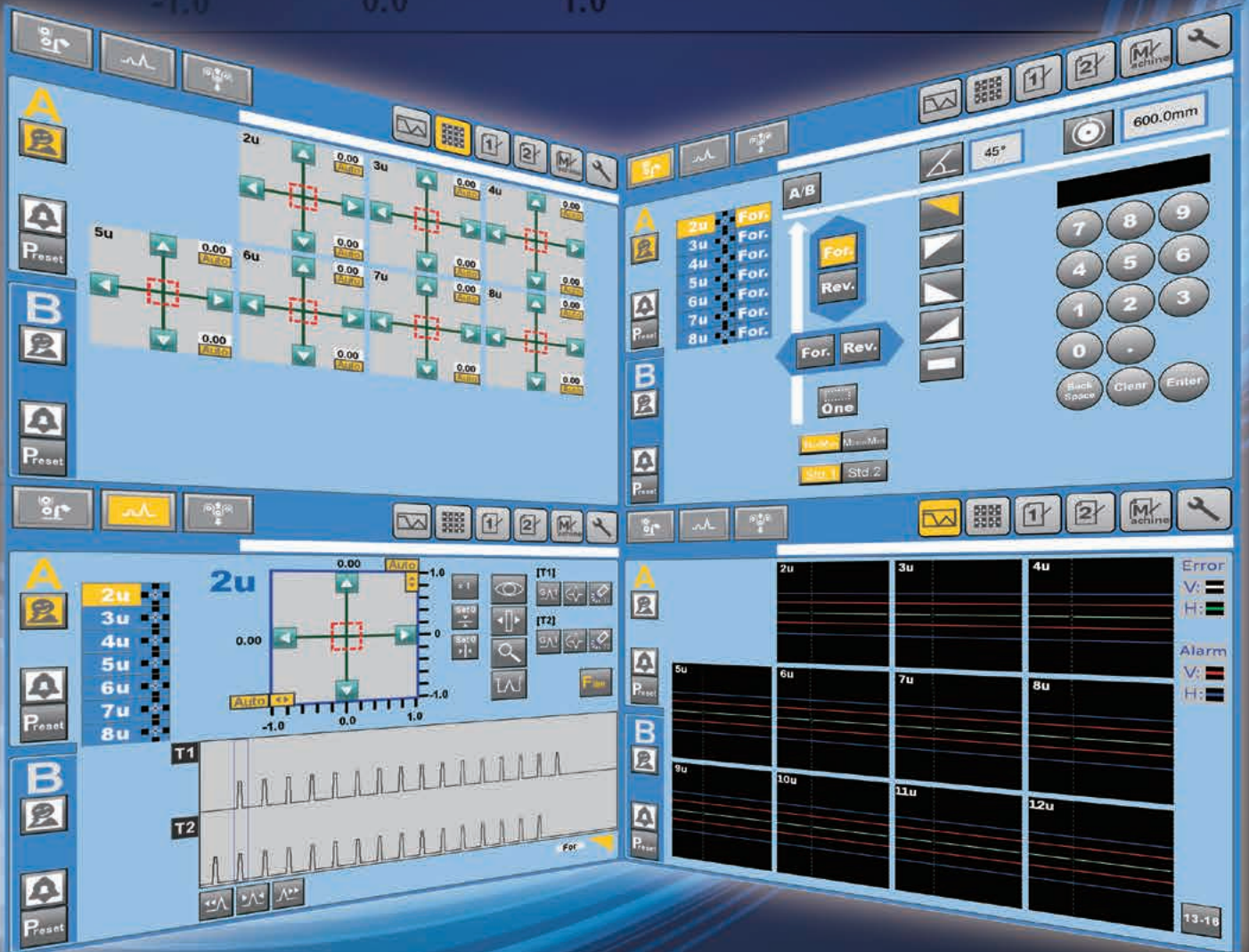


Automatic Register Controller

COLORCON

SKT[®]-001

自动套色控制系统 “COLORCON”



概述

Summary of COLORCON

◆简介 COLORCON

是一种用于多色机组式凹版印刷机上进行自动套准的印刷设备。它利用跟踪光电扫描头检测的印刷过程中的各种重叠颜色的偏差，经电脑分析，将偏差处理为控制指令信号发送到与之对应的套色补偿辊上进行高精度自动调整偏差。

◆用途

- 食品等包装用薄膜的多色印刷
- 多色出版印刷
- 装饰纸的多色印刷
- 在纸张印刷时，正反面印刷套准，折页及裁切的套准定位控制

◆COLORCON is an automatic register controller for process color gravure printing, and this high-precision and high-productivity equipment detects the registration error by a photoelectric detector, and automatically drives its compensator-rollers to correct and control the registration error automatically.

◆Application

- Multi-color printing of packaging films for food and other products
- Multi-color printing of publication
- Multi-color printing of bottom labels
- Surface-reverse registering in paper printing and registering in folding and cutting

SKT®-001型

最早独立开发销售、深受用户好评的DT-950MII型号、经过精心改良、实现能应对AC伺服电机系统控制、更容易操作的SKT®-001型产品。

Model SKT®-001

SKT®-001 has been newly developed for easier operation and suitable AC servo motor control by improving DT-950MII now being highly reputed.

特点

- ◆ 彩色液晶触摸屏 (15英寸), 显示清晰
- ◆ 配置了鼠标用USB接口
- ◆ 日、英、中3语的人机界面 (开机中可切换)
- ◆ 一键式操作的寻址对标的准备作业 (对应顺/逆标记)
- ◆ 根据卷料的状态, 一键式操作可变更为最适用的修正量
- ◆ 通过失效保险功能防止误修正
- ◆ 配置了光纤式扫描头标准设备
- ◆ 采用了透光率高、分辨率极高、能保持清晰透亮图像、高耐用性、有极好的防刮性的表面声波触摸式操作屏幕
- ◆ 在双收双放分头式印刷机时, A端、B端可独操作
- ◆ 最多可对应16色

Features

- ◆ Clear display by a TFT color touch monitor. (15-inch)
- ◆ USB port for mouse operation.
- ◆ Instructions for guidance are prepared in Japanese, English, and Chinese. (language can be switched on display.)
- ◆ Automatic gate set-up function. (applicable to forward and reverse marks.)
- ◆ An optimum correction quantity can be set by "one-touch" operation by the conditions of printing materials.
- ◆ Prevention of wrong correction by a fail-safe function.
- ◆ Optical fiber type scanning head is mounted as the standard equipment.
- ◆ Monitor uses ultrasonic touch monitor with high bright visibility and has superior durability and scratch resistance
- ◆ Individual operation of the A system and B system is possible when used as a split printing.
- ◆ Can be used with up to 16 colors.

主要技术规格

- 适用凹版轮转印刷机
- 套色修正机构
纵向修正: 套准补偿辊调整 - 调整料带长度 (可以对应AC伺服电机系统)
横向修正: 版辊调整 - 版辊左右移动
- 检测精度
纵向套色: ±0.01[mm]
横向套色: ±0.01[mm]
- 适用印刷速度 10 ~ 1,000[m/分] (版辊周长为1000mm时)
- 修正速度
纵向: 标准 1.0[mm/秒] (料带移动量)
横向: 标准 0.4 ~ 0.6[mm/秒] (版辊左右移动量)
- 微调范围: 各方向: 9.99[mm]
- 检测颜色: 底色为黑、白时, 可以用肉眼识别的实用颜色
- 警报设置范围 0.1 ~ 0.9[mm] 可调
- 电源 AC100/200 ~ 240[V] ±10% 单相 50/60[Hz] 1KVA
- 适应环境温度: 0 ~ 40[°C] (触摸屏 5 ~ 35[°C])
湿度: 25 ~ 80[%RH] (无结露)

Specifications and Performance

- Applicable printer : Web-fed gravure rotary press
- Correction compensation function
Length : Compensator roll correction system (applicable for AC servo motor)
Sidelay : Lateral move system by using cylinders (Use a single-phase synchronous register motor)
- Detection accuracy
Length : ±0.01[mm]
Sidelay : ±0.01[mm]
- Applicable printing speed : 10 ~ 1000[m/min] (CY1000mm)
- Correction speed
Length : Standard 1[mm/sec] (on web)
Sidelay : Standard 0.4 to 0.6[mm/sec] (Cylinder move quantity)
- Fine adjustment range : ±9.99[mm] in each direction
- Detection color :
A practical color visible against white or black.
- Alarm setting range : 0.1 to 0.9mm variable
- Power supply :
AC100/200~240[V] ±10% 1φ 50/60[Hz] 1KVA
- Environmental Condition :
Temperature : 0 ~ 40[°C] (Touch Monitor 5 ~ 35[°C])
Humidity : 25 ~ 80[%RH] (no condensation)

构成

- 主控制柜: 1台
- 扫描头 (纸张/透明薄膜兼用): 通道数 (台) (颜色数 -1)
光纤式: Ff 型号扫描头
(横向/纵向排列标记均可应对), 光纤电缆、中继盒
LED式: HW 型号或 RB 型号, 连接电缆、中继盒
- 脉冲发生器
机械主传动轴机器: 1台 (双工位机时为2台)

Configuration

- Main body : 1 unit
- Scanning head (paper/transparent film type) :
number of channels pieces (printing units -1)
Optical fiber type :
Ff head (Vertical and horizontal register mark arrangement correspond to both.), Optical fiber cable , junction box
LED type : HW head or RB head , junction cord , junction box
- Pulse generator
Line shaft drive machine : 1 piece (2 pieces in case of a split type)
Sectional drive (compensator-less) machine :

■ 系统标准构成 Standard Configuration



■ 主控制柜
Main body



■ 光纤扫描头 (Ff 型号)
Scanning head (Ff type)



■ 光纤电缆
Optical fiber cable



■ 光纤扫描头中继盒
Scanning junction Box



■ 脉冲发生器 (PGV 型)
Pulse generator (PGV type)

■ 另售 Option



■ 同步电机
Synchronous motor



■ 伺服电机
Servo motor

丰富的可选购件 Option

01 预对版(PS)/ 预对准(GPS)系统

高精度的初始预套, 可大大减少废料。

PS/GPS system

Since the initial register can be set precisely before printing, the wastage can be reduced at the beginning of printing.

03 分离型

为了有效利用印刷现场的空间, 屏幕和主机为可分离式。(最远距离 50m)

Monitor - separated type

The monitor can be separated from the main unit for effective utilization of limited space in a printing site. (max. distance 50m)

05 与本公司的印刷缺陷检测系统 联动

通过与本公司的印刷缺陷检测系统 (GT-2000, OFT 系列) 联动, 实现了可管理套色不准发生的历史纪录。

Linked with inspection system

Linked with our inspection system (GT-2000, OFT series) will enable history management that is generation position of register error.

02 交流伺服电机控制

带有套准补偿辊调整机构的机器, 可采用交流伺服电机实现变速控制。

快速的预对版、套色精度更提高、特别是在高速印刷时可大大减少套色废料。

AC Servo Motor control

Variable speed control that we used AC Servo Motor for by machine belonging to compensator rollers system is possible.

Initial registering can be done first, and the registering accuracy is improved by far.

This control is particularly useful for reducing the loss during high-speed printing.

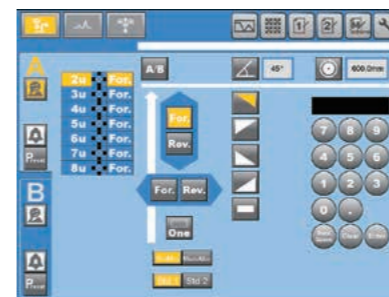
04 系统分别独立操作

双工位机构的分头印刷时, 两端可独立操作、更提高了操作工效。

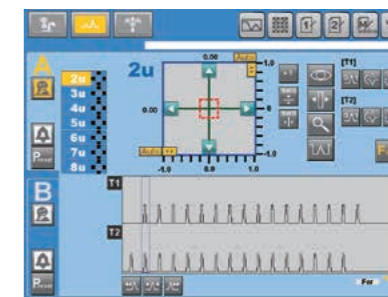
System individual operation

Split type is possible individual operation according to a system that is more efficient.

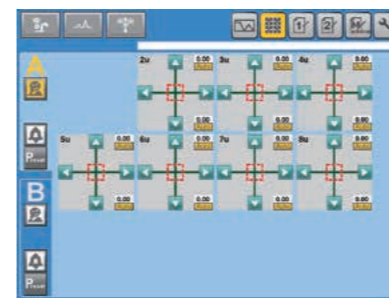
■ 操作面板 Control Panel



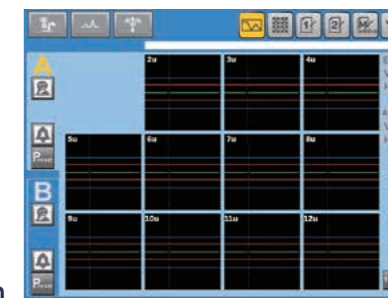
■ 初始设置画面
Initial settings screen



■ 套色画面
Oscillator screen

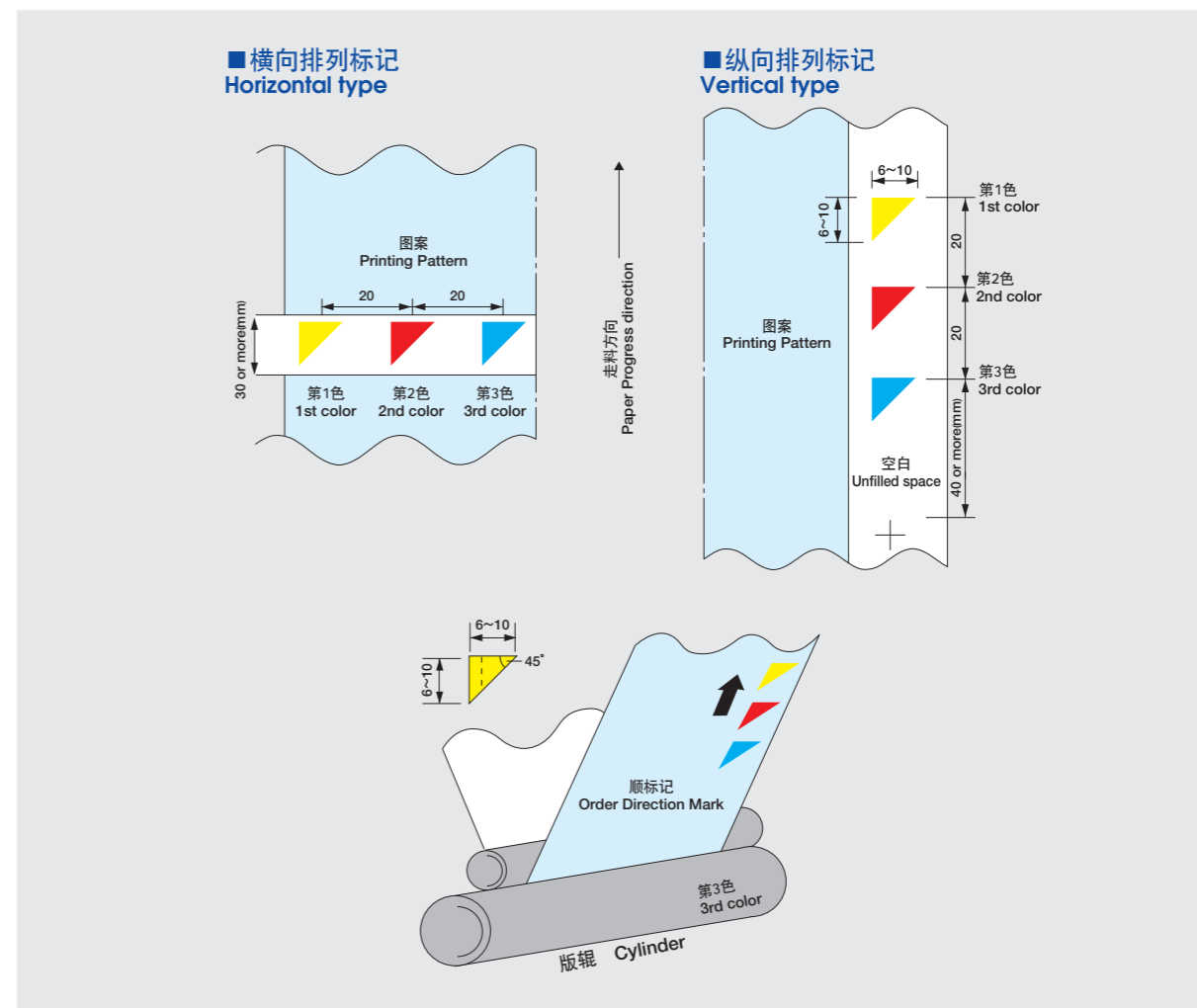


■ 总套色画面
Register control screen

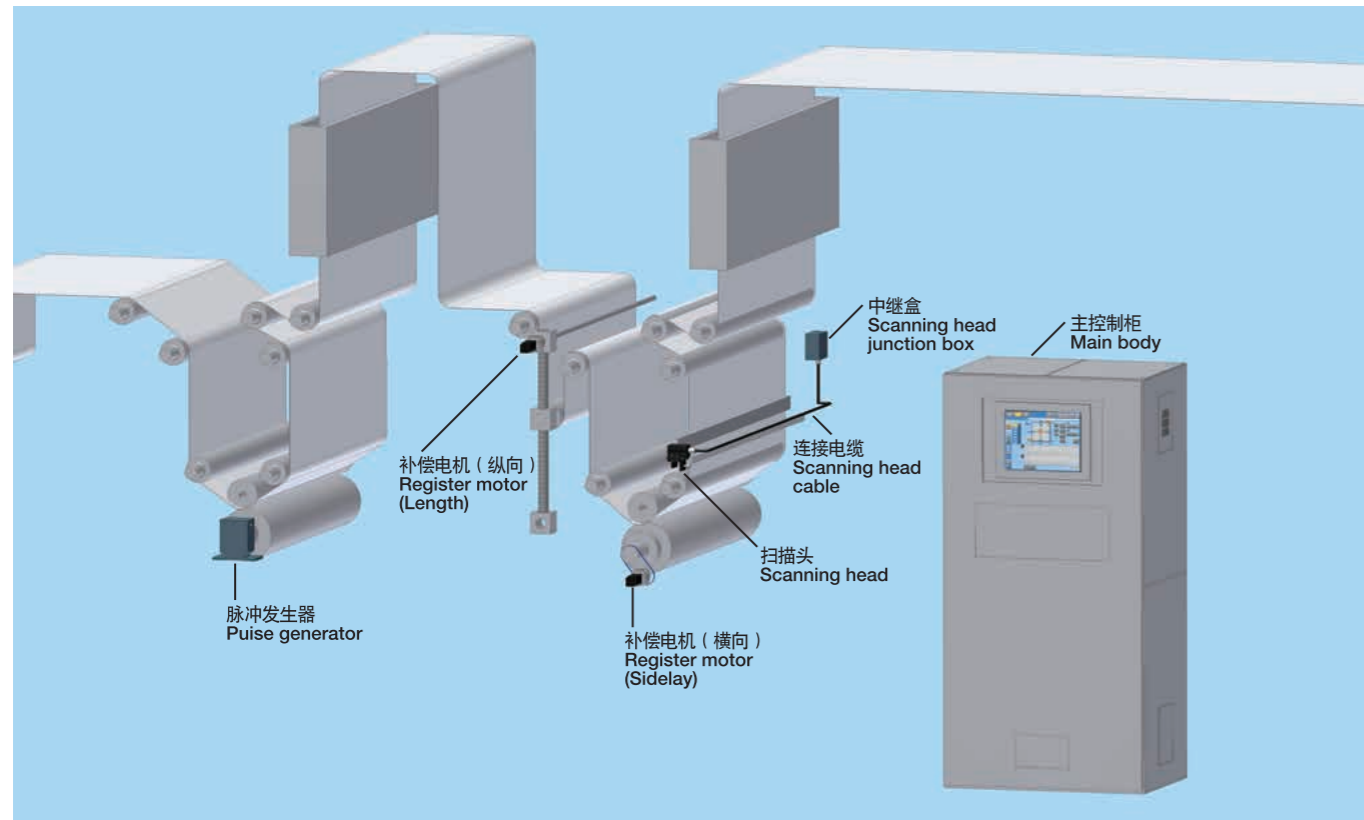


■ 套色误差曲线
线显示图画面
Graph screen

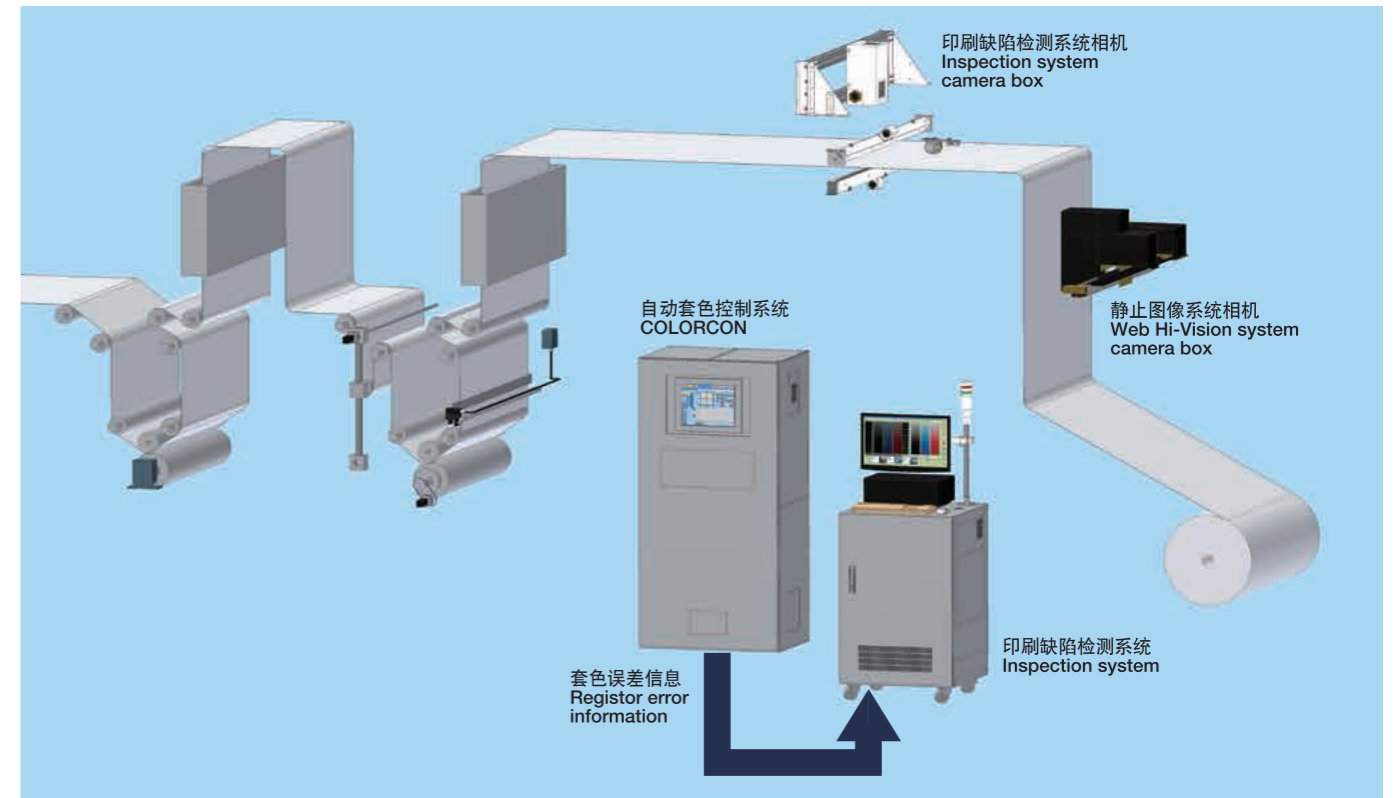
■ 套色标记引进方法与尺寸 Dimensions of register mark



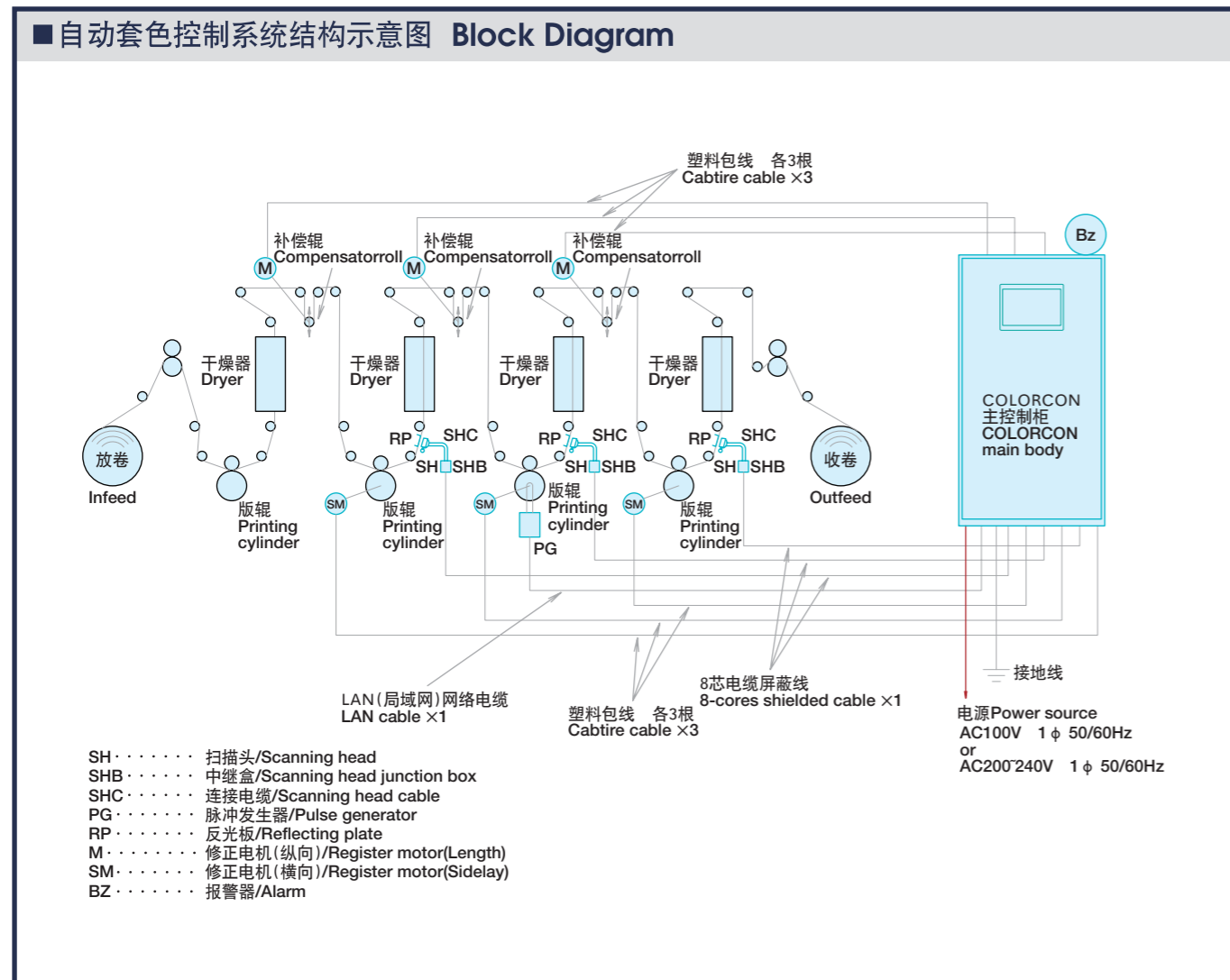
■系统构成示意图 System Configuration Diagram



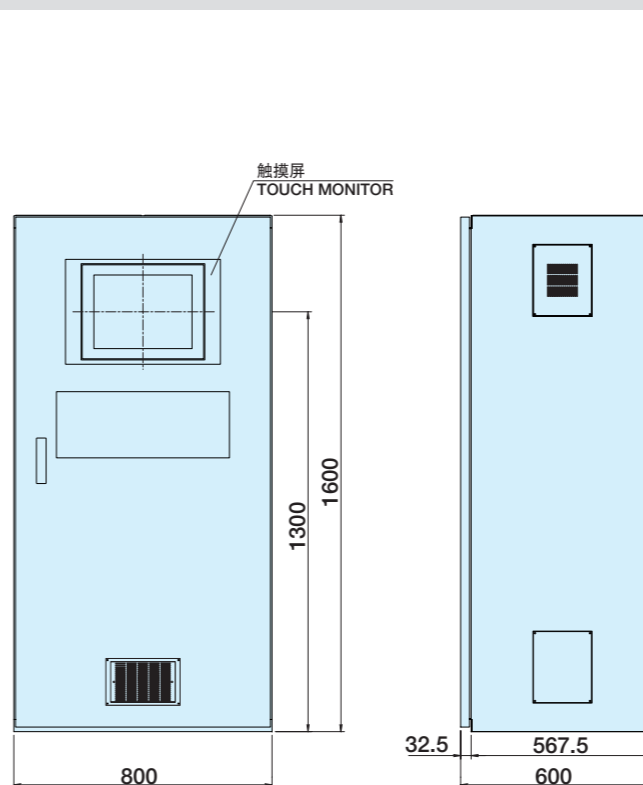
■自动套色控制系统 (SKT[®]-001) 与本公司其他相关产品的联动 Linked with COLORCON(SKT[®]-001) and our system



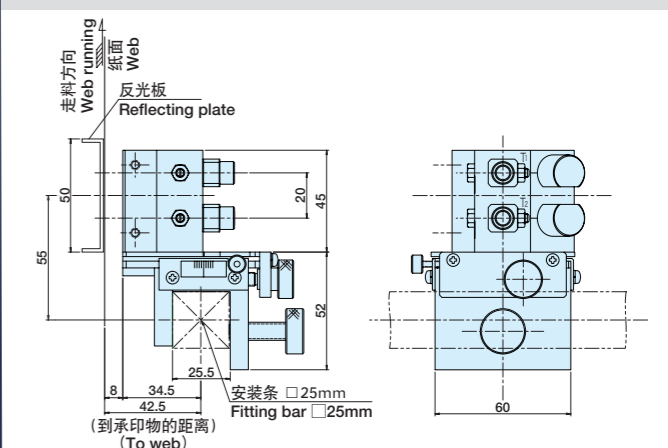
■自动套色控制系统结构示意图 Block Diagram



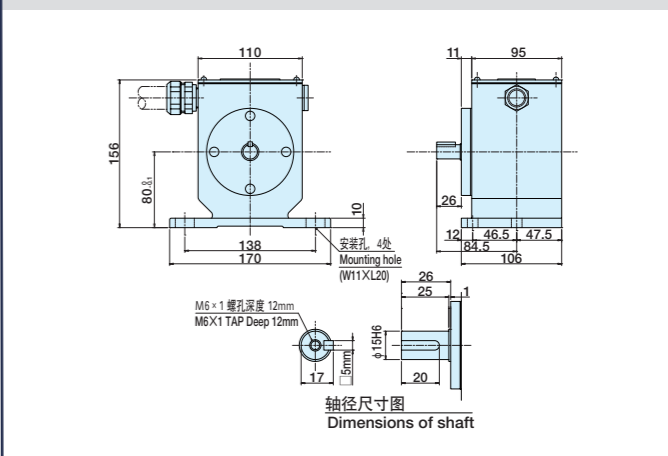
■主控制柜 Main Body



■扫描头 (Ff 型号) Scanning Head Ff type (Optical type)



■脉冲发生器 PGV 型 Pulse Generator PGV type



TAIYO ELECTRIC IND. CO.,LTD.
大洋電機産業株式会社 
URL <http://www.taiyo-e.co.jp/>

总公司	STATION-PLAZA-TOWER 2-22-1, NISHINIPPORI, ARAKAWA-KU, TOKYO, 116-0013 JAPAN TEL: +81 3 3802 7421 FAX: +81 3 3802 7424
筑波工厂	NO.29 KASUMINOSATO, AMI-MACHI, INASHIKI-GUN, IBARAKI, PREF, 300-0315 JAPAN TEL: +81 29 889 2480 FAX: +81 29 889 2487
大阪营业所	YSK-BUILD 1-2-5, UCHIHON-MACHI, CHUO-KU, OSAKA, 540-0026 JAPAN TEL: +81 6 6942 5720 FAX: +81 6 6942 4677

HEAD OFFICE	: 2-22-1 Nishinippori, Arakawa-ku, Tokyo, Japan 116-0013 Tel: 81-3-3802-7421 Fax: 81-3-3802-7424
TSUKUBA FACTORY	: 29 Kasuminosato, Ami-machi, Inashiki-gun, Ibaraki, Japan 300-0315 Tel: 81-29-889-2480 Fax: 81-29-889-2487
OSAKA SALE OFFICE	: 1-2-5 Uchi-Honmachi, Chuo-ku, Osaka, Japan 540-0026 Tel: 81-6-6942-5720 Fax: 81-6-6942-4677



KIGENG TRADING CO., LTD.
基源貿易有限公司
新北市中和區中山路2段411號6樓
6F., No. 405, Sec. 2, Jungshan Rd., Junghe
Dist, New Taipei City, Taiwan 235, R. O. C.
TEL: 886-2-2225-7688 FAX: 886-2-2225-1978
URL: <http://www.kigeng.com.tw>
E-mail: sales@kigeng.com.tw

0000000000